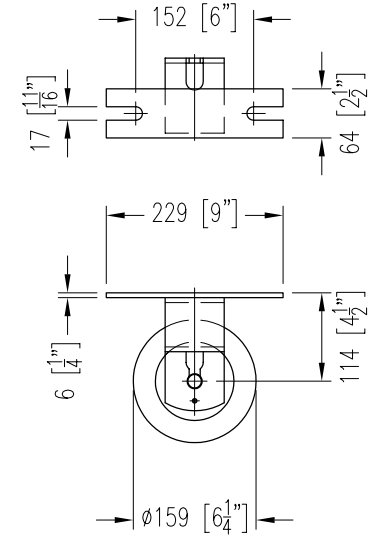
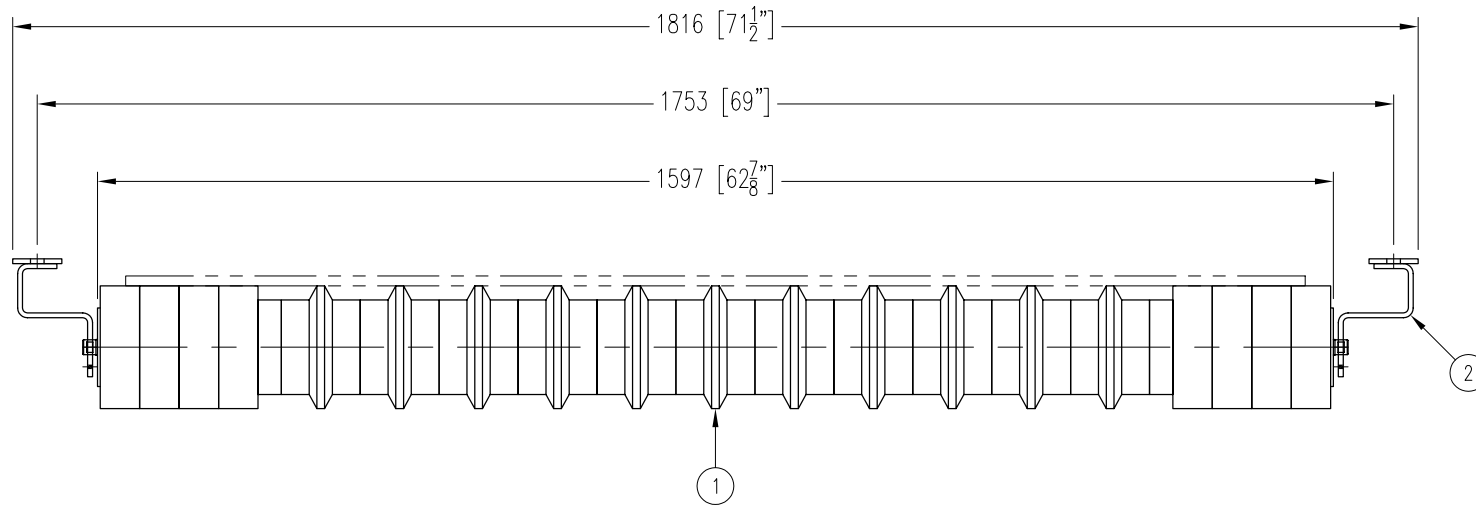


ITEM	DESCRIPTION	REMARKS	DWG/PART	LENGTH	QTY	WEIGHT
1	RUBBER DISC RETURN ROLL		BBRD620251597A5		1	61
2	RETURN IDLER END BRACKET	NB-480-176A	BBRBRC345		2	7
TOTAL WEIGHT / LBS						68



CONTINENTAL CONVEYOR
& MACHINE WORKS LTD.
CONVOYEUR CONTINENTAL
& USINAGE LTEE.

NAPANEE, ONTARIO, CANADA
THETFORD MINES, QUEBEC, CANADA

FLAT RUBBER DISC RETURN IDLER

60" BELT WIDTH 6-1/4" ϕ ROLL 20/25mm SHAFT CEMA C5 DUTY

PART NO.

BB-31100-6-60

DRAWING NO.

REVISION

4

DATE

30 MAR 2009

JOB NO.

P.O. NO.