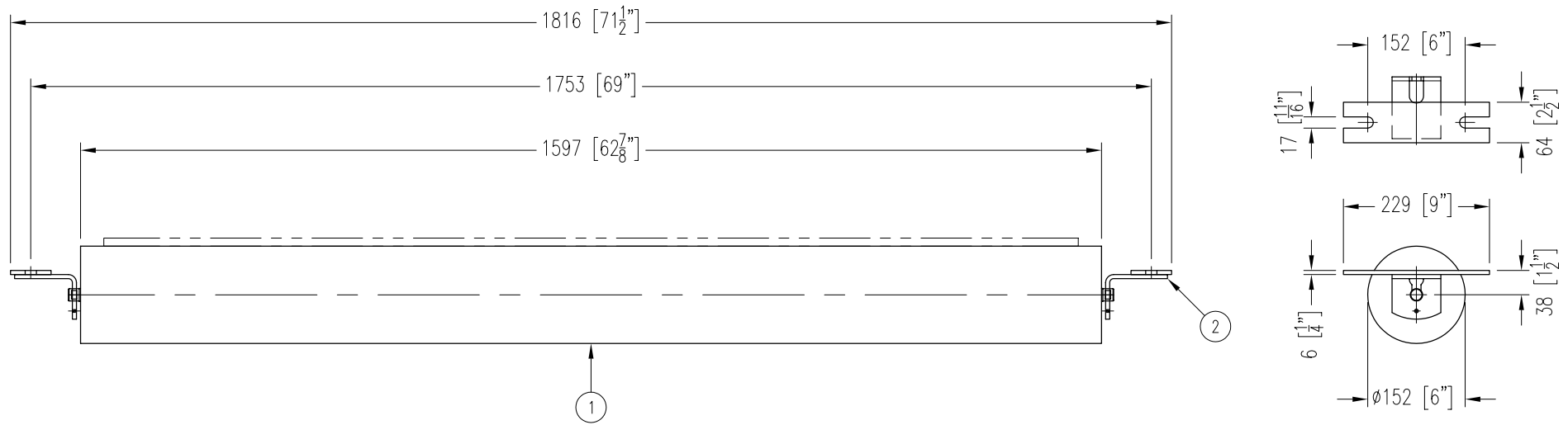


ITEM	DESCRIPTION	REMARKS	DWG/PART	LENGTH	QTY	WEIGHT
1	RETURN ROLL		BBRR620251597A5		1	76
2	RETURN IDLER END BRACKET	NB-480-173A	BBRBRC315		2	5
	TOTAL WEIGHT / LBS					81



CONTINENTAL CONVEYOR  
& MACHINE WORKS LTD.  
CONVOYEUR CONTINENTAL  
& USINAGE LTEE.

NAPANEE, ONTARIO, CANADA  
THETFORD MINES, QUEBEC, CANADA

## FLAT RETURN IDLER

60" BELT WIDTH

6"  $\phi$  ROLL

20/25mm SHAFT

CEMA C6 DUTY

DATE

04 AUG 2006

JOB NO.

PART NO.

BB-30100-6-60-15

DRAWING NO.

REVISION

3

P.O. NO.