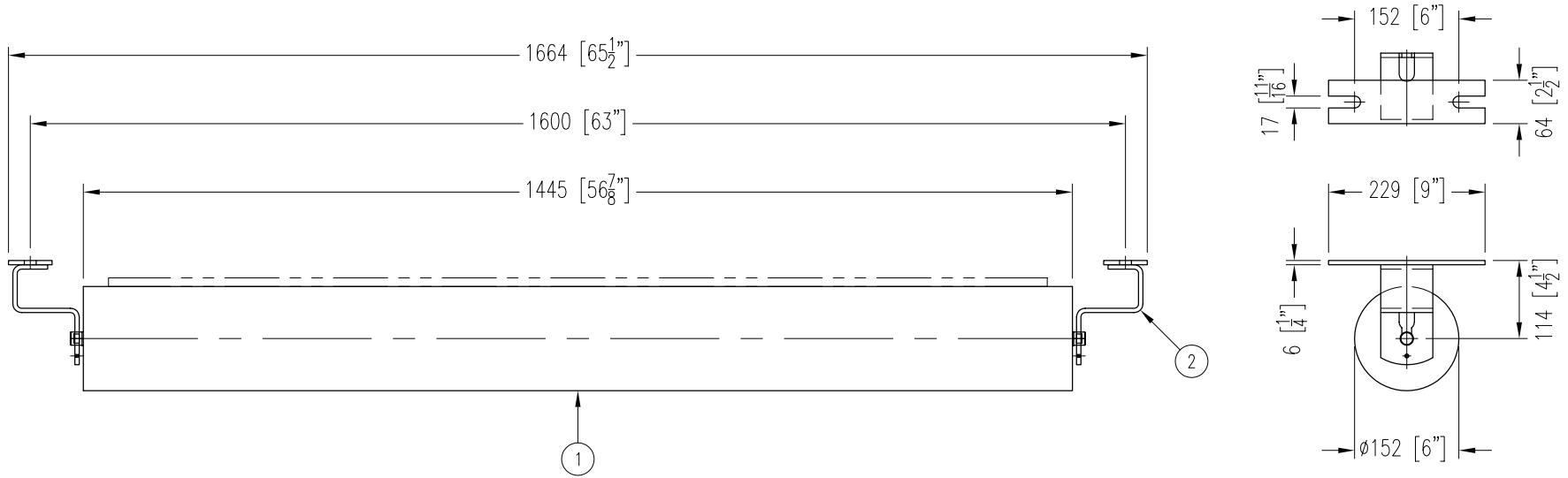


ITEM	DESCRIPTION	REMARKS	DWG/PART	LENGTH	QTY	WEIGHT
1	RETURN ROLL		BBRR620251445A5		1	69
2	RETURN IDLER END BRACKET	NB-480-176A	BBRBRC345		2	7
TOTAL WEIGHT / LBS						76



CONTINENTAL CONVEYOR
& MACHINE WORKS LTD.
CONVOYEUR CONTINENTAL
& USINAGE LTEE.

NAPANEE, ONTARIO, CANADA
THETFORD MINES, QUEBEC, CANADA

FLAT RETURN IDLER

54" BELT WIDTH

6" ϕ ROLL

20/25mm SHAFT

CEMA C6 DUTY

DATE
04 AUG 2006

JOB NO.

PART NO.

BB-30100-6-54

DRAWING NO.

REVISION

3

P.O. NO.