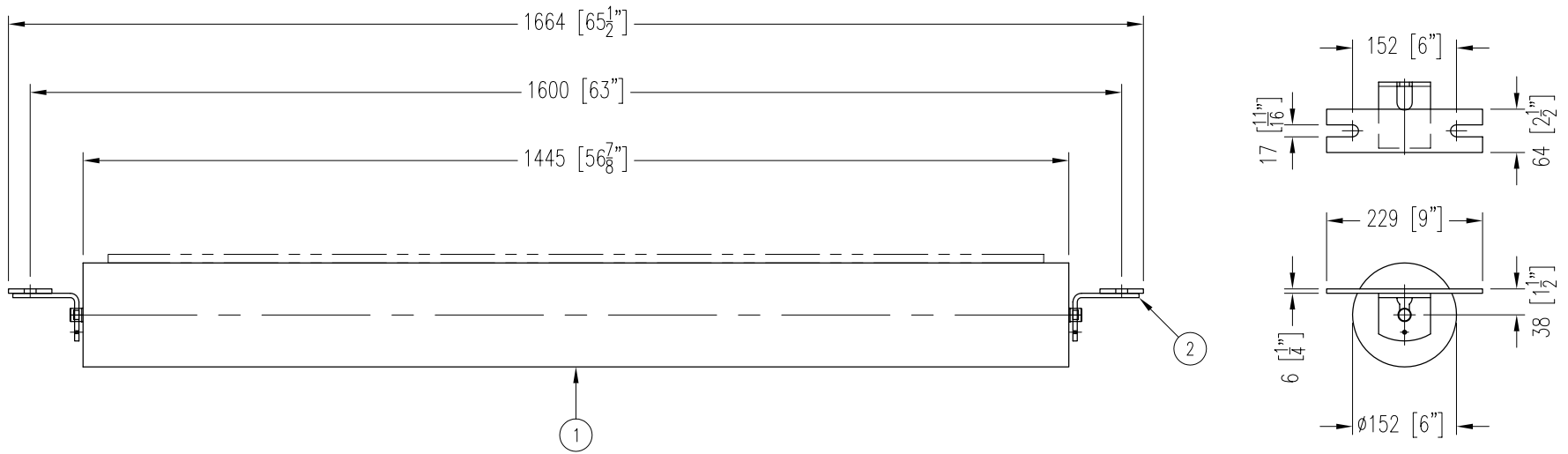


ITEM	DESCRIPTION	REMARKS	DWG/PART	LENGTH	QTY	WEIGHT
1	RETURN ROLL		BBRR620251445A5		1	69
2	RETURN IDLER END BRACKET	NB-480-173A	BBRBRC315		2	5
TOTAL WEIGHT / LBS						74



CONTINENTAL CONVEYOR
& MACHINE WORKS LTD.
CONVOYEUR CONTINENTAL
& USINAGE LTEE.

NAPANEE, ONTARIO, CANADA
THETFORD MINES, QUEBEC, CANADA

FLAT RETURN IDLER

54" BELT WIDTH

6" ϕ ROLL

20/25mm SHAFT

CEMA C6 DUTY

DATE

04 AUG 2006

JOB NO.

P.O. NO.

PART NO.

BB-30100-6-54-15

DRAWING NO.

REVISION

3