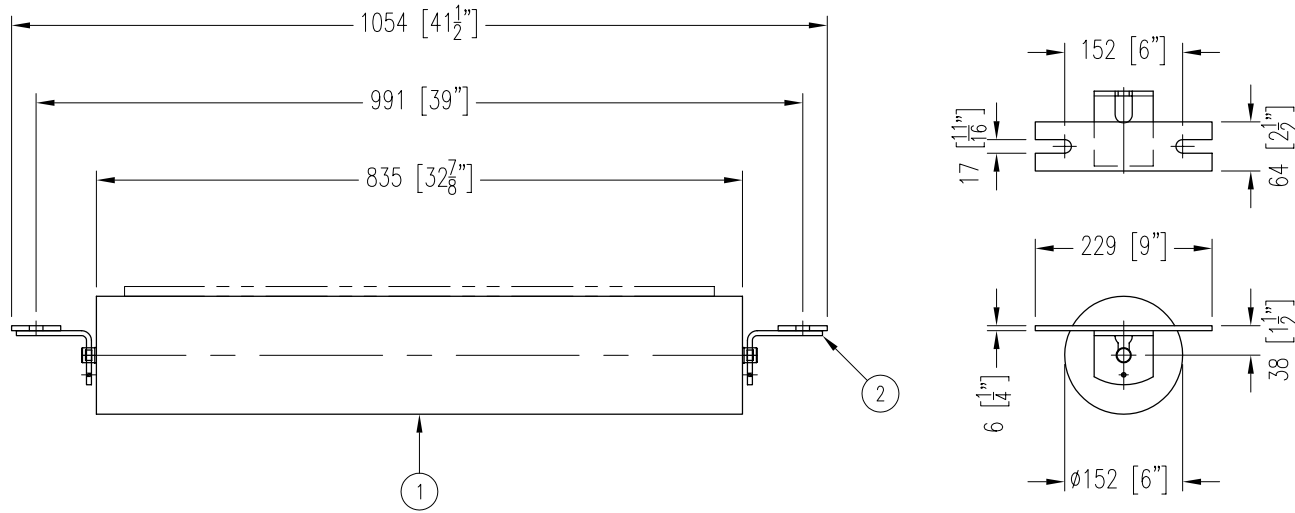


ITEM	DESCRIPTION	REMARKS	DWG/PART	LENGTH	QTY	WEIGHT
1	RETURN ROLL		BBRR620250835A5		1	42
2	RETURN IDLER END BRACKET	NB-480-173A	BBRBRC315		2	5
TOTAL WEIGHT / LBS						47



CONTINENTAL CONVEYOR
& MACHINE WORKS LTD.
CONVOYEUR CONTINENTAL
& USINAGE LTEE.

NAPANEE, ONTARIO, CANADA
THETFORD MINES, QUEBEC, CANADA

FLAT RETURN IDLER

30" BELT WIDTH 6" ϕ ROLL 20/25mm SHAFT CEMA C6 DUTY

PART NO.
BB-30100-6-30-15

DRAWING NO.

REVISION
3

DATE
04 AUG 2006

JOB NO.

P.O. NO.