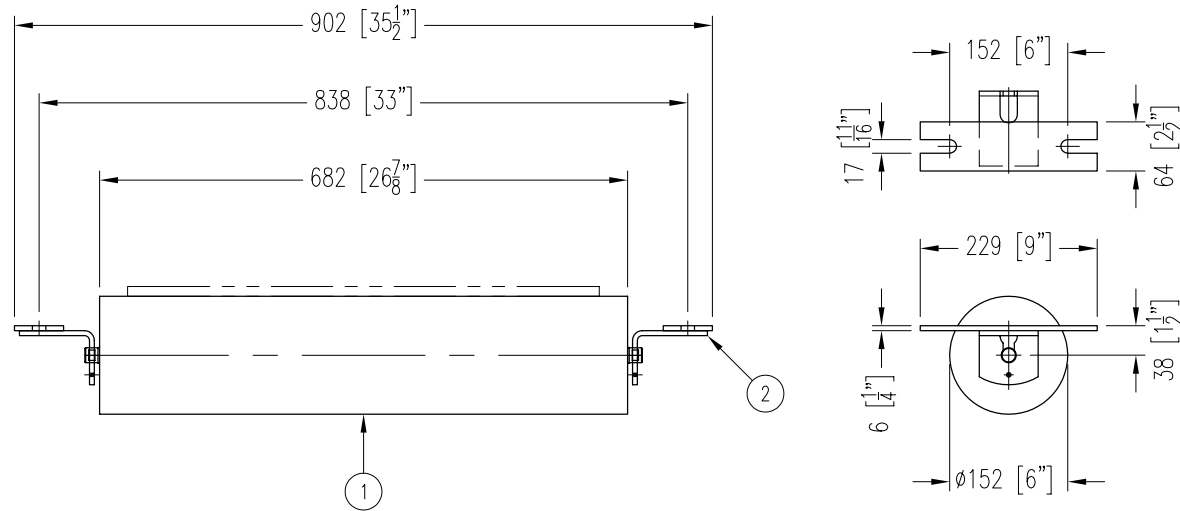


ITEM	DESCRIPTION	REMARKS	DWG/PART	LENGTH	QTY	WEIGHT
1	RETURN ROLL		BBRR620250682A5		1	35
2	RETURN IDLER END BRACKET	NB-480-173A	BBRBRC315		2	5
TOTAL WEIGHT / LBS						40



CONTINENTAL CONVEYOR  
& MACHINE WORKS LTD.  
CONVOYEUR CONTINENTAL  
& USINAGE LTEE.

NAPANEE, ONTARIO, CANADA  
THETFORD MINES, QUEBEC, CANADA

### FLAT RETURN IDLER

24" BELT WIDTH      6"  $\phi$  ROLL      20/25mm SHAFT      CEMA C6 DUTY

PART NO.  
BB-30100-6-24-15

DRAWING NO.

REVISION  
3

DATE  
04 AUG 2006

JOB NO.

P.O. NO.