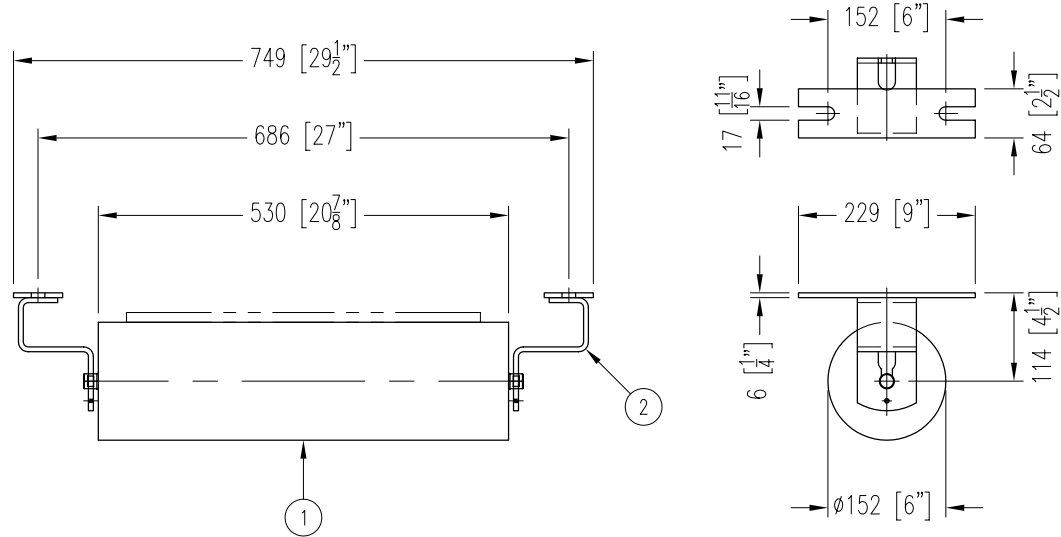


ITEM	DESCRIPTION	REMARKS	DWG/PART	LENGTH	QTY	WEIGHT
1	RETURN ROLL		BBRR6520250530A5		1	28
2	RETURN IDLER END BRACKET	NB-480-176A	BBRBRC345		2	7
TOTAL WEIGHT / LBS						35



CONTINENTAL CONVEYOR  
& MACHINE WORKS LTD.  
CONVOYEUR CONTINENTAL  
& USINAGE LTEE.

NAPANEE, ONTARIO, CANADA  
THETFORD MINES, QUEBEC, CANADA

### FLAT RETURN IDLER

18" BELT WIDTH      6"  $\phi$  ROLL      20/25mm SHAFT      CEMA C6 DUTY

PART NO.  
BB-30100-6-18

DRAWING NO.  
REVISION  
3

DATE  
04 AUG 2006

JOB NO.

P.O. NO.