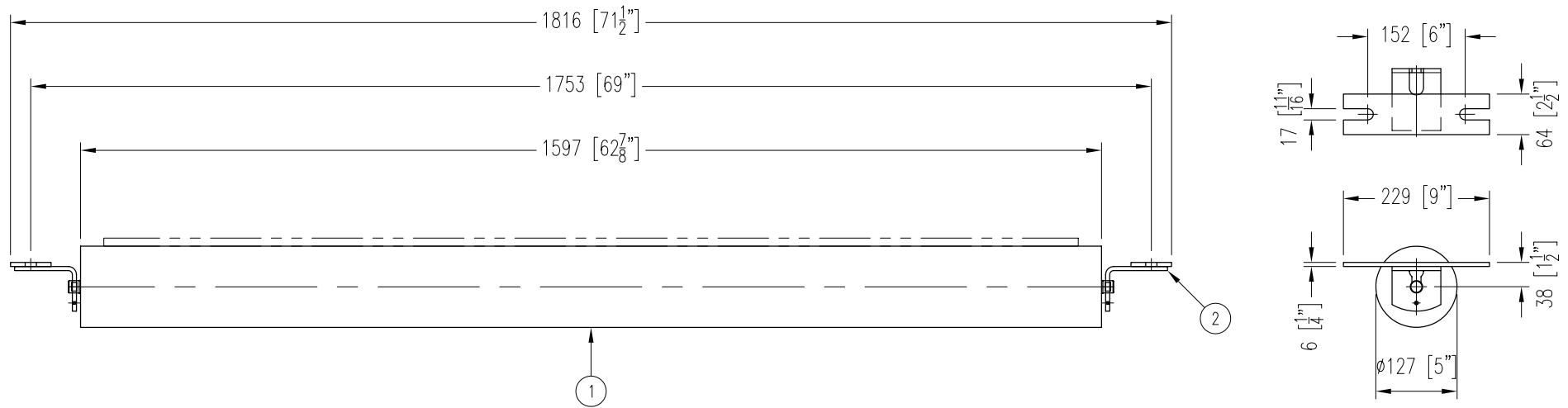


ITEM	DESCRIPTION	REMARKS	DWG/PART	LENGTH	QTY	WEIGHT
1	RETURN ROLL		BBRR520251597A4		1	53
2	RETURN IDLER END BRACKET	NB-480-173A	BBRBRC315		2	58
TOTAL WEIGHT / LBS						60



CONTINENTAL CONVEYOR
& MACHINE WORKS LTD.
CONVOYEUR CONTINENTAL
& USINAGE LTEE.

NAPANEE, ONTARIO, CANADA
THETFORD MINES, QUEBEC, CANADA

FLAT RETURN IDLER

60" BELT WIDTH 5" ϕ ROLL 20/25mm SHAFT CEMA C5 DUTY

PART NO.
BB-30100-5-60-15

DRAWING NO.
REVISION
0

DATE
04 AUG 2006
JOB NO.
P.O. NO.