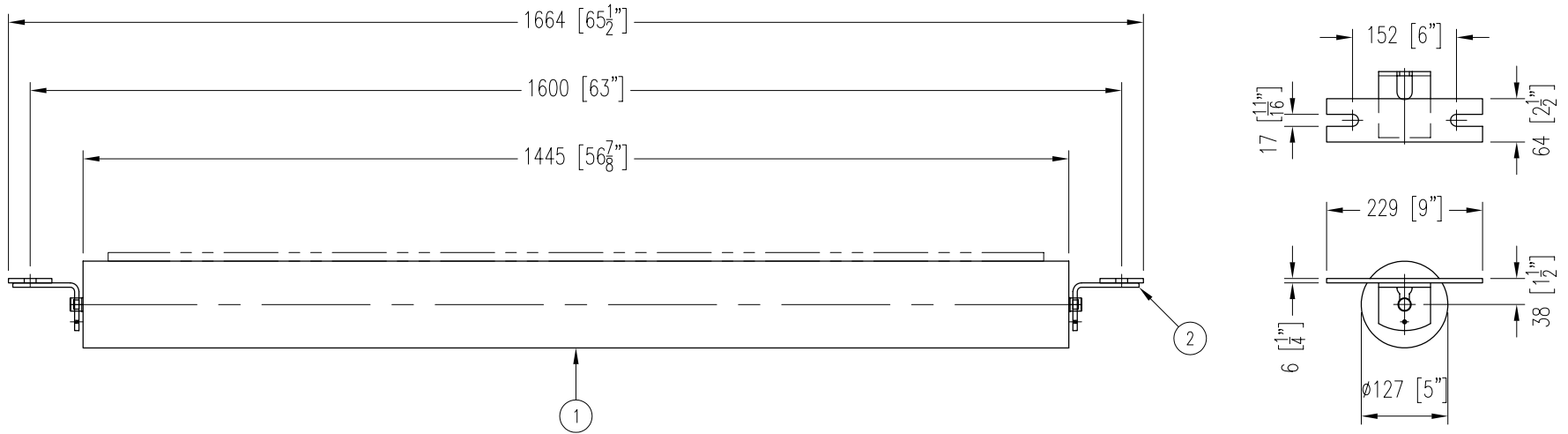


ITEM	DESCRIPTION	REMARKS	DWG/PART	LENGTH	QTY	WEIGHT
1	RETURN ROLL		BBRR520251445A4		1	49
2	RETURN IDLER END BRACKET	NB-480-173A	BBRBRC315		2	5
TOTAL WEIGHT / LBS						54



CONTINENTAL CONVEYOR
& MACHINE WORKS LTD.
CONVOYEUR CONTINENTAL
& USINAGE LTEE.

NAPANEE, ONTARIO, CANADA
THETFORD MINES, QUEBEC, CANADA

FLAT RETURN IDLER

54" BELT WIDTH

5" ϕ ROLL

20/25mm SHAFT

CEMA C5 DUTY

DATE
04 AUG 2006

JOB NO.

PART NO.

BB-30100-5-54-15

DRAWING NO.

REVISION

0

P.O. NO.