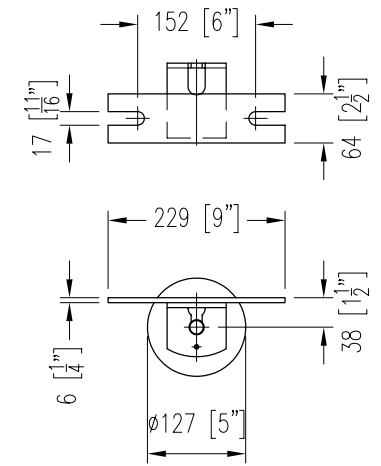
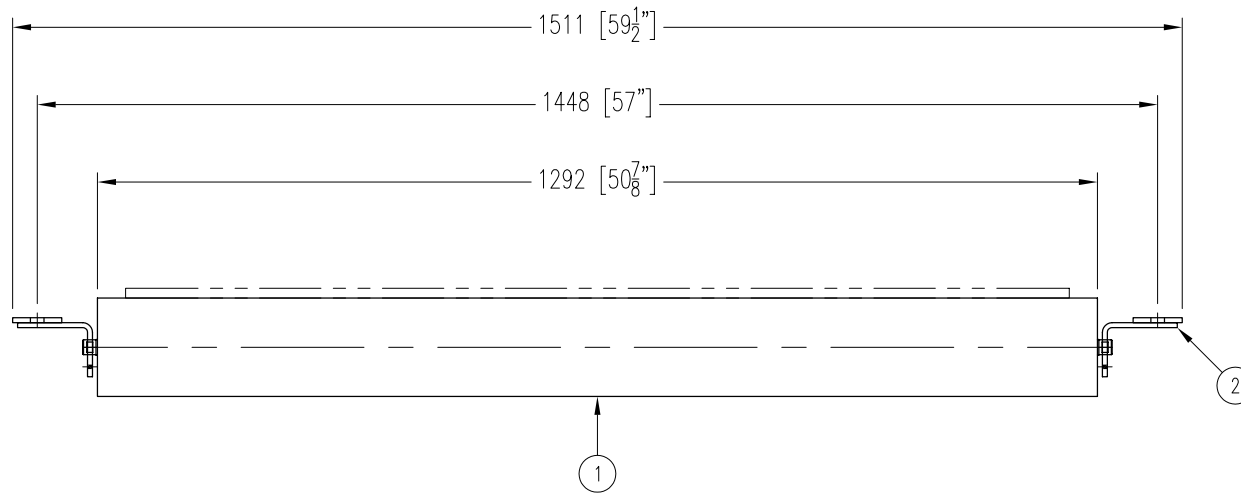


| ITEM | DESCRIPTION | REMARKS | DWG/PART | LENGTH | QTY | WEIGHT |
|--------------------|--------------------------|-------------|-----------------|--------|-----|--------|
| 1 | RETURN ROLL | | BBRR520251292A4 | | 1 | 45 |
| 2 | RETURN IDLER END BRACKET | NB-480-173A | BBRBRC315 | | 2 | 5 |
| TOTAL WEIGHT / LBS | | | | | | 50 |



CONTINENTAL CONVEYOR
& MACHINE WORKS LTD.
CONVOYEUR CONTINENTAL
& USINAGE LTEE.

NAPANEE, ONTARIO, CANADA
THETFORD MINES, QUEBEC, CANADA

FLAT RETURN IDLER

48" BELT WIDTH 5" ϕ ROLL 20/25mm SHAFT CEMA C5 DUTY

PART NO.

BB-30100-5-48-15

DRAWING NO.

REVISION

0

DATE

04 AUG 2006

JOB NO.

P.O. NO.