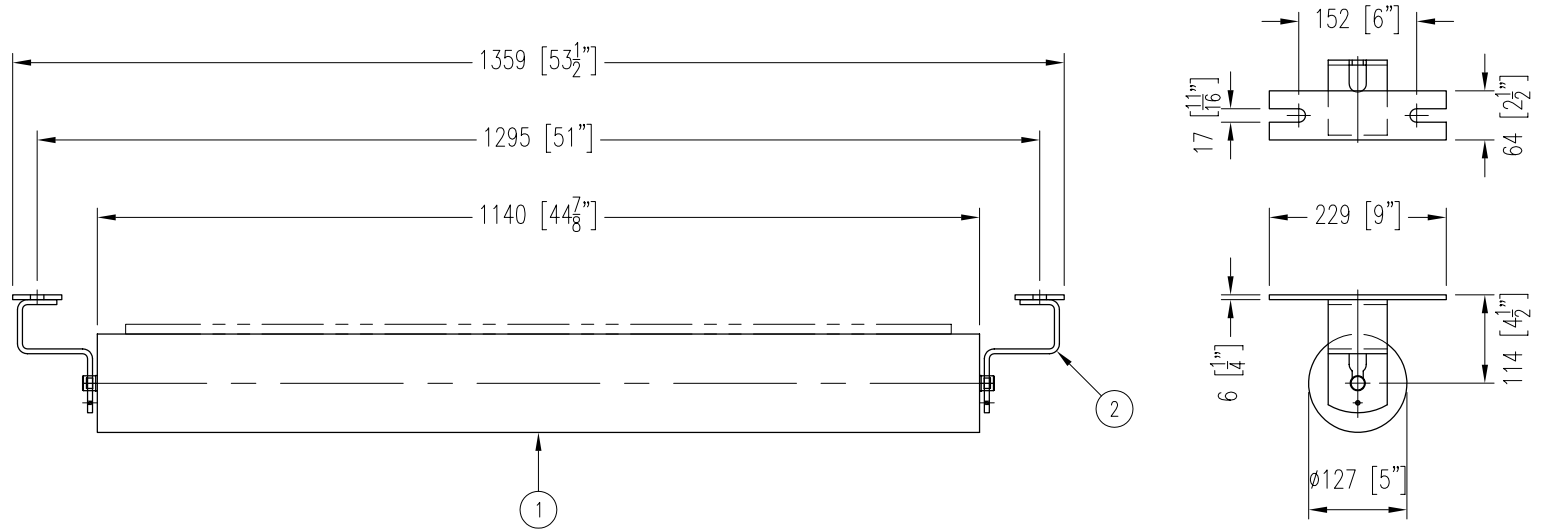


| ITEM | DESCRIPTION | REMARKS | DWG/PART | LENGTH | QTY | WEIGHT |
|--------------------|--------------------------|-------------|-----------------|--------|-----|--------|
| 1 | RETURN ROLL | | BBRR520251140A4 | | 1 | 40 |
| 2 | RETURN IDLER END BRACKET | NB-480-176A | BBRBRC345 | | 2 | 7 |
| TOTAL WEIGHT / LBS | | | | | | 47 |



CONTINENTAL CONVEYOR
& MACHINE WORKS LTD.
CONVOYEUR CONTINENTAL
& USINAGE LTEE.

NAPANEE, ONTARIO, CANADA
THETFORD MINES, QUEBEC, CANADA

FLAT RETURN IDLER

42" BELT WIDTH 5" Ø ROLL 20/25mm SHAFT CEMA C5 DUTY

PART NO.

BB-30100-5-42

DRAWING NO.

REVISION

3

DATE

04 AUG 2006

JOB NO.

P.O. NO.