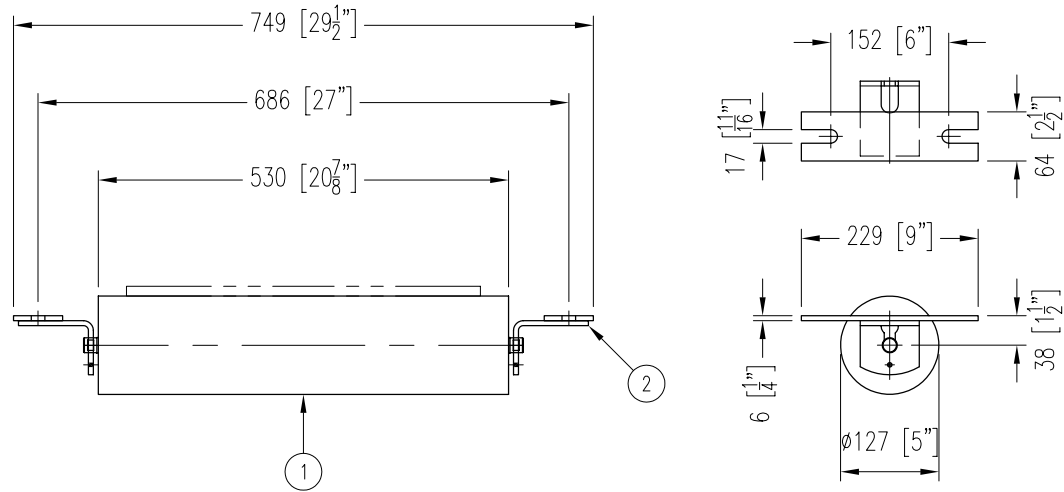


ITEM	DESCRIPTION	REMARKS	DWG/PART	LENGTH	QTY	WEIGHT
1	RETURN ROLL		BBRR520250530A4		1	22
2	RETURN IDLER END BRACKET	NB-480-173A	BBRBRC315		2	5
TOTAL WEIGHT / LBS						27



CONTINENTAL CONVEYOR  
& MACHINE WORKS LTD.  
CONVOYEUR CONTINENTAL  
& USINAGE LTEE.

NAPANEE, ONTARIO, CANADA  
THETFORD MINES, QUEBEC, CANADA

### FLAT RETURN IDLER

18" BELT WIDTH    5"  $\phi$  ROLL    20/25mm SHAFT    CEMA C5 DUTY

PART NO.

BB-30100-5-18-15

DRAWING NO.

REVISION

0

DATE

04 AUG 2006

JOB NO.

P.O. NO.